

Clermont County All-Hazards Mitigation Plan Update



April 15, 2020



Purpose

- ❑ Protect lives and property through the identification of hazards and the development of mitigation strategies to reduce or eliminate risk
- ❑ Required by 44 Code of Federal Regulations, Part 201.3 and The Robert T. Stafford Disaster Relief and Emergency Assistance Act
- ❑ Every county, village and city must have a Hazard Mitigation Plan
- ❑ Plan must be updated every 5 years
- ❑ Eligibility requirement for pre/post-disaster mitigation grants



Timeline

- ❑ July 2017 Applied for Pre-Disaster Assistance Grant
- ❑ August 2018 Received Pre-Disaster Assistance Grant
- ❑ Oct. 11, 2018 Kick-Off meeting with Core Planning Team (#1)
- ❑ Nov. 15, 2018 Core Planning Meeting (#2) & Public Meeting (#1)
- ❑ Jan. 23, 2019 Core Planning Meeting (#3) & Public Meeting (#2)
- ❑ July 24, 2019 Draft Plan release & 30 day public comment period
- ❑ July 31, 2019 Core Planning Meeting (#4)
- ❑ October 17, 2019 Ohio EMA completed 1st Review
- ❑ November 17, 2019 Ohio EMA completed 2nd Review
- ❑ January 8, 2020 FEMA completed 1st Review
- ❑ January 21, 2020 Final Draft submitted to FEMA
- ❑ March 2, 2020 FEMA Approved Plan
- ❑ April 15, 2020 Presentation to Board of County Commissioners
- ❑ ~ 1 Year All Cities and Villages must adopt Plan



Plan Overview

1	Introduction	Provides background on jurisdictions and the county's features
2	History and Demographics	Provides historical context, communication and utility contacts, and demographic information for the county and the villages
3	Planning Process	Describes the planning process used to develop the Plan
4	Hazard Risk Assessment	Provides a hazard vulnerability assessment for each hazard including: description of events, locations affected, probability of an event occurring and consequences (number of injuries/fatalities; property damage; crop damage)
5	Hazard Mitigation	Provides the hazard prioritization, goals, and detailed mitigation actions
6	Schedule and Maintenance	Discuss the Plan annual review and 5 year plan update requirements
	Appendices	Appendix A: Historical Hazard Events Appendix B: Hazard Mitigation Action – Matrix Scoring Spreadsheet Appendix C: Critical Facilities List Appendix D: Sources Appendix E: FEMA Flood Maps Appendix F: Meeting Documentation



Stakeholders

- Building Code Enforcement
- Emergency Management
- Fire Departments
- Floodplain Administrator
- GIS
- Parks and Recreation
- Planning/Community Development
- Public Information Office
- Engineer / Service Road Departments
- Storm water Management
- Elected Officials
- Cities, Townships, & Villages
- Hospital
- Gas, Electric & Propane Utilities
- Water/Waste Water Utilities
- Waste Haulers
- Cable/Satellite Providers
- Telephone & Internet Providers
- Local Businesses
- Faith-based and Non-profit partners
- Ohio EMA
- ODNR
- OSU Extension
- Farm Service Admin
- USDA
- USACE
- General Public



Hazard Prioritization

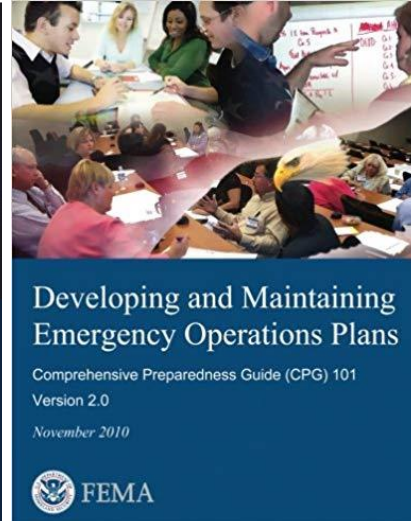
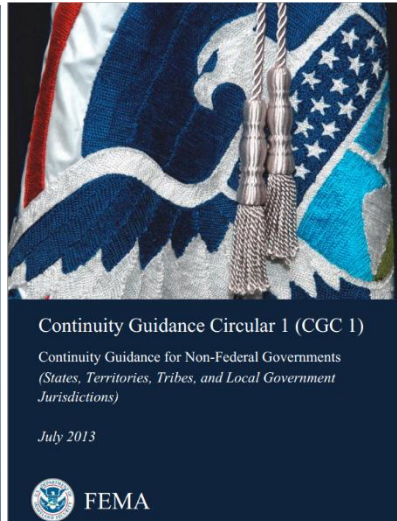
1. Severe Storms
2. Tornadoes
3. Flooding
4. Utility Failure
5. Hazardous Materials Accident
6. Winter Storms
7. Landslides
8. Dam Failure
9. Invasive Species
10. Terrorism
11. Extreme Temperatures
12. Drought
13. Wildfire
14. Earthquakes



Mitigation Actions

All-Hazards

- ❑ Develop/update back-up power capabilities at critical facilities
- ❑ Update continuity of operation plans (COOP)
- ❑ Provide disaster preparedness education and outreach
- ❑ Update emergency operation plans (EOP)
- ❑ Maintain all-hazard outdoor warning sirens
- ❑ Continue code enforcement (e.g. fire, building, zoning, floodplain management)





Mitigation Actions

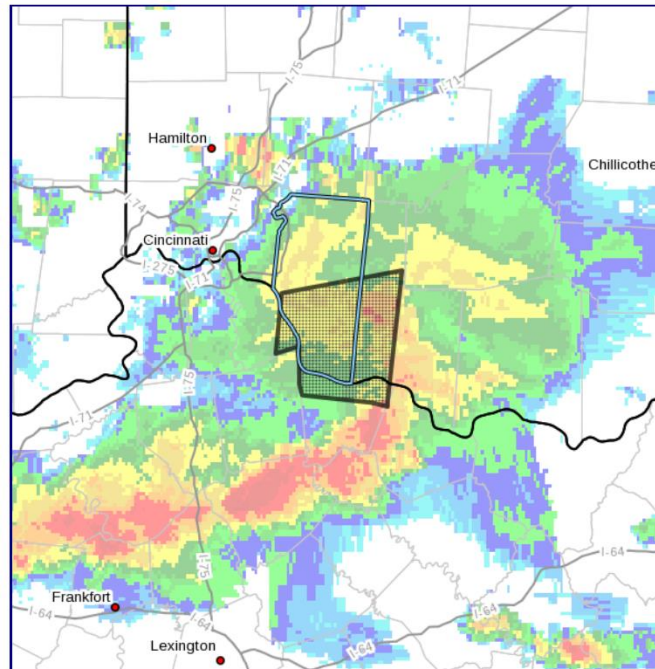
Severe Storms

- ❑ Public education on having multiple means of receiving alerts/warnings
- ❑ Update plans for timely debris clearance following severe storms
- ❑ Maintain National Weather Service *StormReady* certification



Interactive NWS Alert

New event: Severe Thunderstorm Warning for Clermont County, OH
Sent via email and SMS at 7:25 pm EDT, Jun 5th 2019



- ⚡ Receive alerts from the National Weather Service for up to five locations.
- ✓ Get safety reminders, read tips to survive natural disasters, and customize your emergency checklist.
- ⊕ Locate open shelters and where to talk to FEMA in person (or on the phone).
- 📷 Upload and share your disaster photos to help first responders.





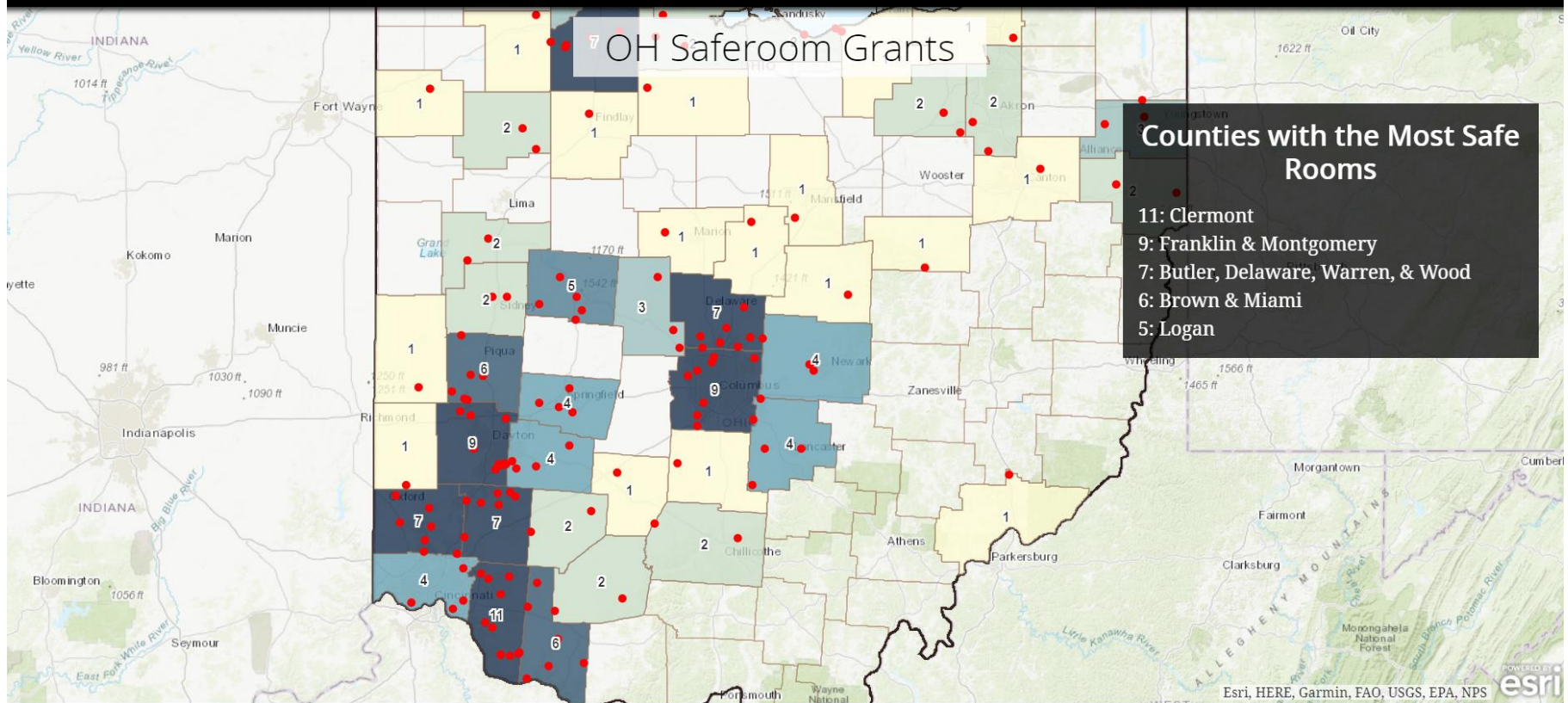
Mitigation Actions

Tornadoes

- ❑ Promote Ohio Safe Room Rebate Program
- ❑ Identify temporary storm safe locations

Ohio Safe Room Rebate Program

[Home](#) [Grants](#) [Installation](#) [Locations](#) [News](#) [Upcoming](#) [Click here for more mitigation success stories](#)





Mitigation Actions

Flooding

- ❑ Improve storm water management systems
- ❑ Identify and study poor draining areas to control flooding
- ❑ Repair or replace ditching and culverts to control flooding
- ❑ Continue to identify and study riverbank stabilization opportunities
- ❑ Provide guidance to property owners on acquisition/flood proofing
- ❑ Encourage residents to purchase flood insurance





Mitigation Actions

Utility Failure

- ❑ Tree trimming along utility lines



Winter Weather

- ❑ Public education on winter weather safety





Mitigation Actions

Hazardous Materials Accidents

- ❑ Develop wellhead protection plan
- ❑ Continue annual LEPC exercises
- ❑ Maintain LEPC and Tier II reporting
- ❑ Update commodity flow study
- ❑ Public outreach regarding disposal of household hazardous waste





Mitigation Actions

Landslides

- ❑ Develop map of landslide prone areas
- ❑ Enforce slide-prone area ordinances to limit fill/dumping
- ❑ Enforce draining control regulations
- ❑ Implement sanitary system codes
- ❑ Provide mitigation guidance to property owners
- ❑ Implement restraining structures to hold soil in place
- ❑ Implement debris flow measures
- ❑ Implement grading to increase slope stability
- ❑ Consider vegetation placement and management plans to increase soil stability
- ❑ Consider placement of utilities outside of landslide prone areas





Mitigation Actions

Dam Failure

- ❑ Coordination with ODNR to implement Dam Safety Program
- ❑ Encourage dam owners to develop/update emergency action plans
- ❑ Encourage dam owners to be prepared to respond should their dam fail
- ❑ Public education regarding downstream risks
- ❑ Coordinate with local communities to ensure they understand the risk



William H. Harsha Lake Dam



Stonelick Lake Dam



Mitigation Actions

Invasive Species

- ❑ Public education on hazard identification, behavior, and quarantine procedures
- ❑ Public education on the importance of not importing/exporting firewood
- ❑ Work with agricultural producers to monitor/minimize nutrient runoff to prevent harmful algal blooms



Asian Longhorn Beetle



Emerald Ash Borer



Stink Bug



Gypsy Moth



Harmful Algal Blooms



Mitigation Actions

Terrorism

- ❑ Encourage critical infrastructure to implement protective measures
- ❑ Coordinate with LE to ensure safety at large public gatherings
- ❑ Provide active aggressor guidance



NOAA's National Weather Service

Heat Index
Temperature (°F)

Relative Humidity (%)	80	82	84	86	88	90	92	94	96	98	100	102	104	106	108	110
40	80	81	83	85	88	91	94	97	101	105	109	114	119	124	130	136
45	80	82	84	87	89	93	96	100	104	109	114	119	124	130	137	
50	81	83	85	88	91	95	99	103	108	113	118	124	131	137		
55	81	84	86	89	93	97	101	106	112	117	124	130	137			
60	82	84	88	91	95	100	105	110	116	123	129	137				
65	82	85	89	93	98	103	108	114	121	128	136					
70	83	86	90	95	100	105	112	119	126	134						
75	84	88	92	97	103	109	116	124	132							
80	84	89	94	100	106	113	121	129								
85	85	90	96	102	110	117	126	135								
90	86	91	98	105	113	122	131									
95	86	93	100	108	117	127										
100	87	95	103	112	121	132										

Likelihood of Heat Disorders with Prolonged Exposure or Strenuous Activity

- ☐ Caution
- ☐ Extreme Caution
- ☐ Danger
- ☐ Extreme Danger



Homeland Security

Extreme Temperatures

- ❑ Provide guidance for vulnerable populations
- ❑ Provide guidance on utility assistance programs



Mitigation Actions

Drought

- ❑ Encourage property owners to install water reduction equipment
- ❑ Develop water storage plans, water use ordinances, contingency plans, and water delivery system plans
- ❑ Encourage farmers to purchase crop insurance



Wildfire

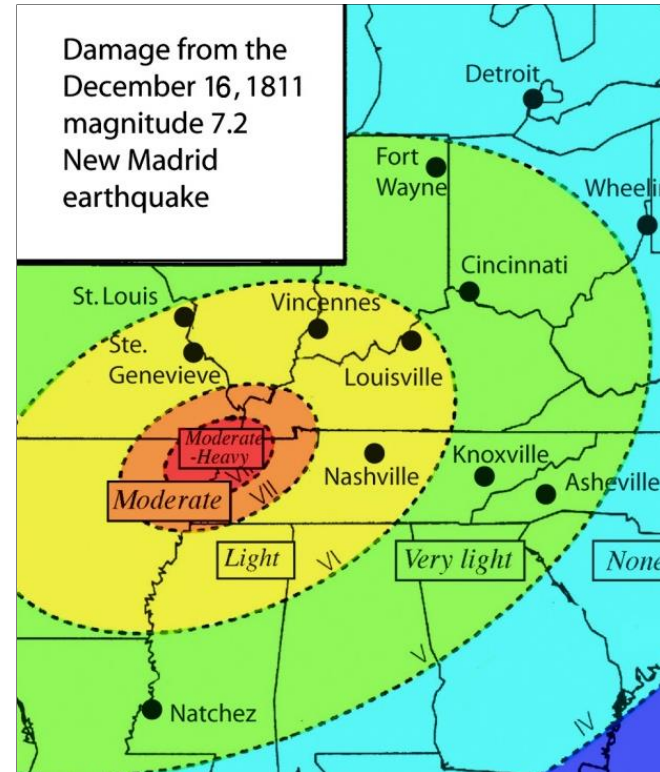
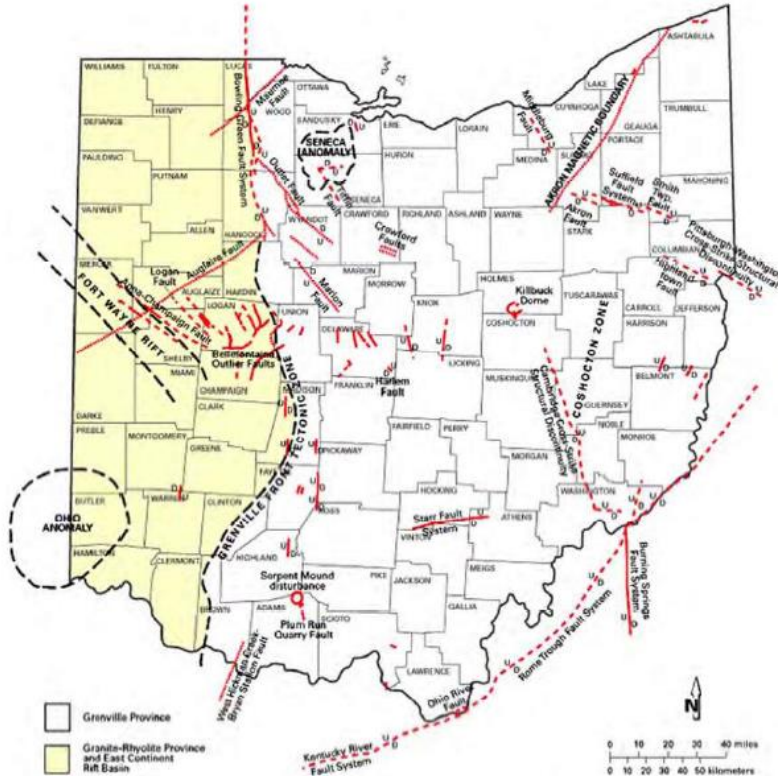
- ❑ Public education on smoking hazards and risk of recreational fires
- ❑ Public education on extreme fire danger and red flag warnings



Mitigation Actions

Earthquakes

- Use community outreach activities to foster awareness of earthquake mitigation actions
- Work with the insurance industry to increase public awareness of the importance of earthquake insurance





Next Steps & Questions

- ❑ Plan becomes effective with the first adoption and FEMA approval
- ❑ EMA will coordinate with Cities and Villages to adopt Plan
- ❑ EMA will coordinate with Townships to adopt Plan
- ❑ All communities will be eligible for disaster mitigation funds
- ❑ Plan will be reviewed annually during a regular LEPC meeting
- ❑ A comprehensive plan update will begin in 2023

Pam Haverkos

Clermont County EMA

513.732.7661

phaverkos@clermontcountyohio.gov

<http://ema.clermontcountyohio.gov>